

RIG 14

RIG

Alco 450
Tandem Axle Trailer Mounted 16 Wheeler
Static Hook Load: 200,000 lb / 89,000 daN (8 line)
Caterpillar C-18 (700 HP)
Alco 450 Single Drum Draw Works with Cobalt Disc Assist (42-10)
Sand Line Core Retrieval Winch / Survey Winch
GVW: 62,000 kg 24.4 m (L) x 3.85 m (W) x 4.8 m (H)

MAST

Foremost 150T Topdrive, 25,000 ft / lb, 3 Speed, 200 rpm
Maximum
Connection Torque: 36,000 ft / lb with Tongs
Maximum Working Clearance: 15 m (49.2')
Topdrive rated to 5,000 psi

SUBSTRUCTURE

Trailer Mounted
3.35 - 4.5 m Drill Floor Height (11' - 14.75')
Table Bushing Capacity 200,000 lb / 89,000 daN
Bushings Out 27.5" Opening
BOP Handling System for BOP's up to 13 5/8 Class II

HYDRAULIC CATWALK

Hydraulic Catwalk with Pipe Management System
Hydraulic Controlled Auxiliary Pipe Tubs
4 Leveling Jacks
BHA Storage in Catwalk
V Door with Pipe Guard
GVW: 14,820 kg 17.4 m (L) x 3.7 m (W) x 3.2 m (H)

MUD PUMP

F-1000 Triplex
Mission 50 HP Precharge Pump
Stroke: 7.5" 191mm
Caterpillar C27 850 HP Diesel Engine
150 psi Air Compressor with Tool Board
3,000 psi / 21,000 kPa Working Pressure with 4" Discharge
Oteco 3" Pressure Relief Valve
GVW: 30,970 kg 11.7 m (L) x 3.7 m (W) x 3.6 m (H)

MUD TANKS

Mud System Total Volume 52 m³
Trip Tank Volume: 4 m³
Pill Tank Volume: 1.4 m³
2 x 50 HP Mission Mixing Pumps
Pro Shaker
Poor Boy De-gasser, Mixing Hopper, Mud Guns
2-5 HP Agitators
GVW: 27,790 kg, 17.5 m (L) x 3.75 m (W) x 3.5 m (H)

COMBINATION BUILDING

Cummins Generator Engine 6CTA8 175 kW
Newage Generator (480 V / 208 V)
80 Gallon 4 Station Accumulator
10,000 L Fuel Tank (TC-44 certified)
GVW: 25,040 kg 13.8 m (L) x 3.1 m (W) x 3.2 m (H)

WATERTANK / DOGHOUSE

Total Volume: 80 m³
Doghouse Inside Water Tank for Transport
c/w Lift System
7.5 HP Water Circulating Pumps c/w Pressure Washer
GVW: 30,000 kg, 12.2 m (L) x 3.7 m (W) x 3.8 m (H)
Rig Manager's Shack
GVW: 15,450 kg 14.8 m (L) x 3.9 m (W) x 4.2 m (H)

WELL CONTROL

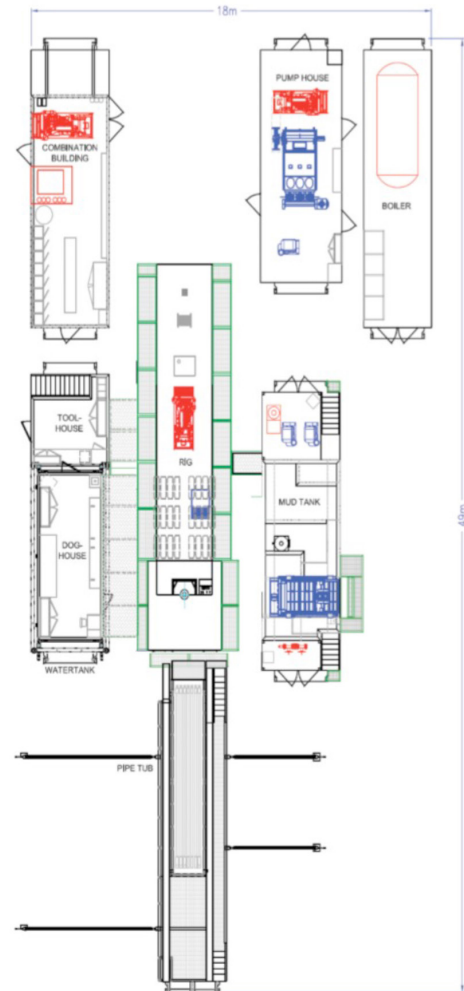
9" BOP's x 21,000 kPa (3,000 psi)
3" Flare Line 8" De-gasser
3" x 3,000 psi Manifold c/w 3" 3,000 psi Gut Manifold

WINTERIZATION

Saskatoon Boiler (60 HP)
Fuel Tank Volume: 6,500 litres
Water Tank Volume: 14.5 m³
GVW: 9,550 kg 9.9 m (L) x 3.2 m (W) x 3.2 m (H)

TUBULARS

2,500 m x 4" Drill Pipe
4 W DC x 4
6 1/2 DC x 4
Summer Loads: 8 (Excluding Pipe)



RIG 14

