

RIG 1

RIG

Atlas Copco TH-60 HD
Static Hook Load 70,000 lb / 31,100 daN
Truck Mounted Rig with Cummins ISX 565 HP, 447 kW @ 1,800 rpm

MAST

Single Mast: 17.8 m (58.4')
Maximum Working Clearance: 14.3 m (49.9') Range III
Fast Feed Rate Down: 67 m / min (219.8' ft / min)
Fast Feed Rate Up: 45.7 m / min (149.9' ft / min)
Pull Down Capacity: 13,608 kg (30,000 lb)
Two Speed Topdrive: 8,000 ft / lb @ 105 rpm 5,500 ft / lb @ 175 rpm
Top Drive Torque: 8,000 ft / lb Maximum Torque
Connection Torque: 16,000 ft / lb with Tongs
Swivel Rated to 1,500 psi
GVW: 31,000 kg, 19 m L x 2.9 m W x 4.4 m H

SUBSTRUCTURE

11' Floor Height, Hydraulic Ramp with 2 - 125,000 lb Cylinders
Hydraulic Power Pack to Operate Substructure & Pipe Tub
B.O.P Carrier for Infield Rig Moves
GVW: 32,270 kg, 16.2 m L x 3.75 m W x 4.2 m H

HYDRAULIC PIPE TUB

Hydraulic Pipe Tub: Range II Drill Pipe / Core Pipe
Range III Casing Capable
GVW: 26,365 kg, 13.9 m L x 3.75 m x W 2.5 m H

MUD PUMP

F-500 Triplex
Mission 6 x 5 x 11 Pre-charge Pump
3,000 psi / 21,000 kPa Working Pressure with 4" Discharge
Stroke: 7.5" / 191 mm
Horsepower: 60 Series Detroit Diesel (500 HP)
Liners Supplied: 6" / 152 mm
150 psi Compressor, Tool Board and Liner Cabinet
GVW: 33,500 kg, 11 m L x 3.75 m W x 2.80 m H

MUD TANKS

Mud System Total Volume: 26 m³
Trip Tank Volume: 2.0 m³
2 - 30 HP Mission Pumps (4 x 3 x 13)
Mini Cobra 3 Panel Linear Motion Shale Shaker
Poor Boy De-gasser, Mixing Hopper, Mud Guns
GVW: 25,040 kg, 11.2 m L x 3.81 m W x 2.9 m H

WATER TANK / DOGHOUSE

Doghouse Inside Water Tank for Transport c/w Cable Lift System
2 Heaters, Pason, Lockers for Drillers, Tool Board, Knowledge Box
3 m Core Bench, 7.5 HP Water Circulating Pump, Pressure Washer
Water Tank Volume: 54 m³
GVW: 29,710 kg, 12.3 m L x 3.75 m W x 2.9 m H

COMBINATION BUILDING

1 - 250 kW AC. 60 Hz power (480 / 208)
Cummins Diesel QSL-9
Change Shack: 8 Lockers
Fuel Tank 14,000 L
GVW: 25,430 kg, 12.3 m L x 3.75 m W x 2.74 m H

WELL CONTROL

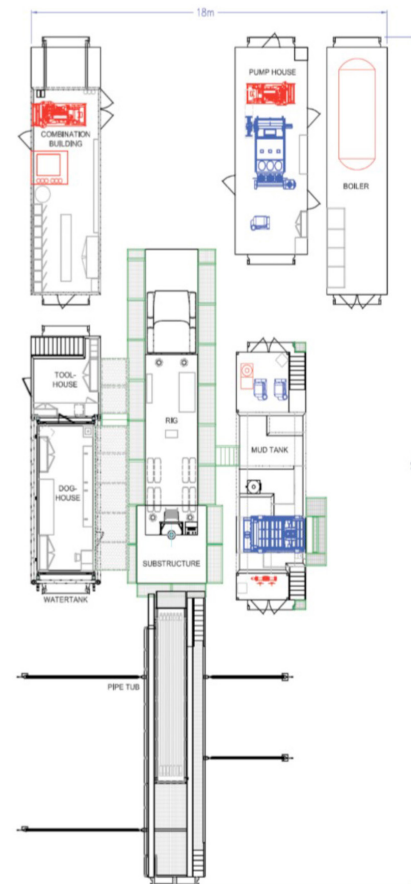
Class III 9" / 228.6 mm 3,000 psi / 20,800 kPa
3" flare line / 6" De-gasser
Control Technology 80 Gallon Accumulator
4 Station with PLC Remotes
2 - 2 1/16" 5,000 psi Chokes
3" X 5,000 psi / 35,000 kPa Manifold

WINTERIZATION

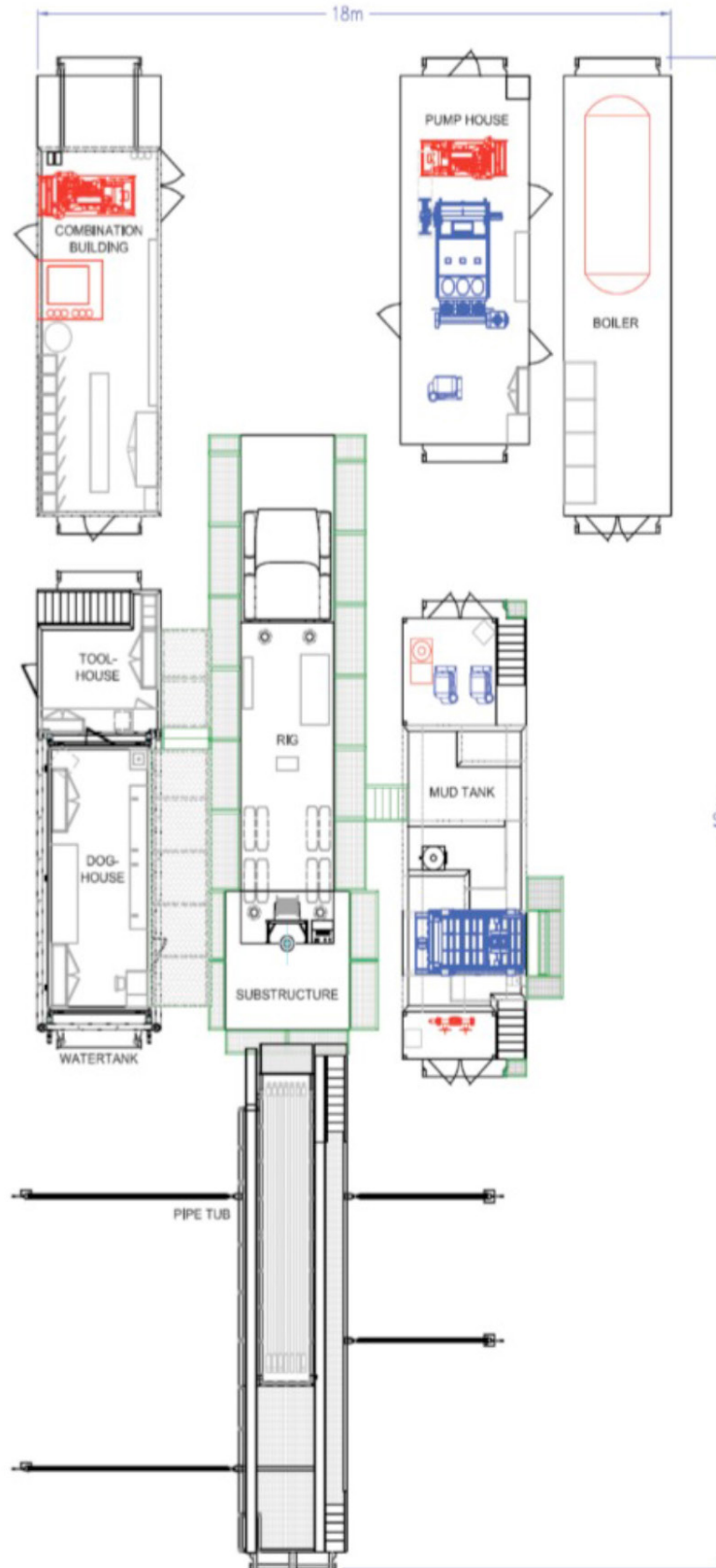
Boiler Size: 80 HP Hurst
Water Storage: 13,000 L High Fire /
Low Fire Webster Burner
GVW: 15,690 kg, 7.9 m L x 3.75 m x W 2.74 m H

TUBULARS

1000 m 3 1/2" Range 2 Drill Pipe
540 m 4 1/2" Core Pipe
6 1/4" DC x 1
4 3/4" DC x 2
Summer Loads : 8 (Excluding Pipe)



RIG 1



SAFETY | RESPECT | ACCOUNTABILITY | TEAMWORK | PERFORMANCE EXCELLENCE